

NETT-WORKINGS

NEUROLOGICAL EMERGENCIES TREATMENT TRIALS (NETT) NETWORK

July 2009

PARTICIPATING HUBS AND INVESTIGATORS

Emory University
 David Wright, MD
 Henry Ford Health System
 Christopher Lewandowski, MD
 Medical College of Wisconsin
 Tom Aufderheide, MD
 New York Presbyterian Hospital
 Stephan Mayer, MD
 Oregon Health & Science University
 Robert Lowe, MD, MPH
 Stanford University
 James V. Quinn, MD
 Temple University
 Nina Gentile, MD
 University of Arizona
 Kurt Denninghoff, MD



University of California, SF
 J. Claude Hemphill, III, MD
 University of Kentucky
 Roger Humphries, MD
 University of Cincinnati
 Arthur Pancioli, MD
 University of Maryland
 Barney J. Stern, MD
 University of Minnesota
 Michelle Biros, MD, MS
 University of Pennsylvania
 Jill Baren, MD, MBE
 University of Texas
 Elizabeth Jones, MD
 Virginia Commonwealth University
 Joseph P. Ornato, MD
 Wayne State University
 Robert Welch, MD

CLINICAL COORDINATING CENTER (CCC)

University of Michigan
 William Barsan, MD

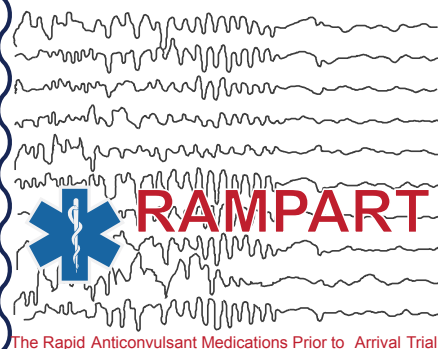
National Institute of Neurological Disorders and Stroke (NINDS)

Clinical Trial Group
 Robin Conwit, MD
 Scott Janis, PhD

STATISTICAL & DATA MANAGEMENT CENTER (SDMC)

Medical University of South Carolina
 Yuko Palesh, PhD

RAMPART Enrollment Begins!



Stanford University has the distinct honor of enrolling the first subject in RAMPART. We are happy to announce we have 12 subjects enrolled at 4 of the 5 active Hubs. Congratulations to the following Hubs on their RAMPART enrollments: Stanford University (1), University of California-San Francisco (6), University of Cincinnati (4), and the University of Minnesota (1).

★ RAMPART ENROLLMENT STAR

UNIVERSITY OF CALIFORNIA, SAN FRANCISCO

Look for Monthly Updates on Enrollment in
 the NETT NewsFlash Starting Next Month

Attention to those interested in EMS:

Visit our new RAMPART EMS Blog to share your thoughts, ideas, experiences, and questions with your peers.
<http://rampartblog.wordpress.com/>

PLEASED TO MEET YOU...

Michelle Biros, MD
Hub Principal Investigator
University of Minnesota

Michelle H. Biros, MD, MS obtained her medical degree from the University of Minnesota and completed her residency and research fellowship in Emergency Medicine at the University of Cincinnati. Prior to medical school, she obtained a Masters of Science degree in Biochemistry. She is an attending emergency physician at Hennepin County Medical Center (HCMC) in Minneapolis, Minnesota and is a Professor of Emergency Medicine at the University of Minnesota and HCMC. She is the Hub PI for the University of Minnesota NETT.



She is currently the Associate Research Director of the Department of Emergency Medicine at HCMC and the Vice Chair of Research for the Department of Emergency Medicine at the University of Minnesota. Her primary research interests are neurological emergencies, biomedical ethics, and psychosocial aspects of emergency care.

Besides the NETT-related projects, her recent research has included studying community attitudes about EFIC, the screening of adolescents for depressive symptoms, screening trauma patients for alcohol use and misuse, and the longitudinal natural medical history of chronically inebriated patients in terms of resource use. She has also studied the frequency of unsuspected illness and injury among intoxicated ED patients, the associations between violence and depression and/or alcohol misuse, and the prevalence of hunger or food insecurity in ED patients.

She is also interested in the teaching of research concepts and principles, and developed the “Fundamentals of Research” lecture series and founded the Research Director’s Interest Group for the Society for Academic Emergency Medicine (SAEM). She routinely lectures on the art of scientific writing. She served as the chair of the SAEM Research Committee for three years and was on the SAEM board of directors for four years. In 1994 she founded and chaired the Coalition of Acute Resuscitation Researchers during its efforts to assist the FDA in redesigning the regulations that govern human subjects research in the United States.

Dr. Biros was the Editor in Chief of Academic Emergency Medicine from 1998 to 2008, and served on the editorial board of the Journal since its inception in 1994.

**WE’LL BE LOOKING
FOR YOU IN OUR
NEXT ISSUE!**

Do you know who you would like to contact, but don’t have their contact information? Visit the Directory on the NETT web site at <http://www.nett.umich.edu/nett/directory>



EMS UPDATE

By Kay Vonderschmidt
NETT EMS Coordinator

RAMPART Tips for Status Epilepticus (SE) Assessment & Treatment When a Patient Is In SE With Tonic/Clonic Movement

- * Airway – is it patent?
 - ☞ Patients sometimes need help protecting their airway during a seizure. Consider inserting a nasopharyngeal airway.
- * Breathing – is the patient hypoxic?
 - ☞ Check oxygen saturation by pulse ox or capnography – consider high flow oxygen.
- * Circulation – Pulse rate and rhythm
 - ☞ Pulse rate less than 40 – consider differential diagnosis of cardiac induced seizure –
 - ☞ Attach heart monitor and treat bradycardia per your protocol
 - ☞ Consider pacing if the patient is bradycardic and seizing
- * Check Blood Glucose
 - ☞ Normal is between 60 and 100 mg/dl
 - ☞ Under 60 mg/dl – treat hypoglycemia per your local protocol – usually with D50 IV or glucagon IM
- * AMPLE History
 - ☞ Allergies – look for medic alert tags at the wrist, ankles and neck for allergy to Versed or Ativan
 - ☞ While checking for medic alert tags also look for “RAMPART Decline” and home incarceration bracelets
 - ☞ Medication – look/ask for current medications the patient is taking
 - ☞ Past History – short term such as recent trauma and long term such as epilepsy or diabetes
 - ☞ Last Meal – remember anything eaten within 4 hours may be vomited
 - ☞ Events – what happened before they started seizing?
- * Benzodiazepines – using any of the common Benzodiazepines (Valium, Versed, or Ativan) can result in respiratory depression. Monitor respiratory rate and correct hypoxia per your protocol.



Visit the RAMPART web site
at rampart.umich.edu

ALIAS

ENROLLMENT AS OF JULY 22, 2009

Hub	Number of Spokes	Patients Enrolled (expected 4.8)
Oregon Health and Science University	1	Legacy
University of Cincinnati	8	6
University of Pennsylvania, Abington	1	6
University of Kentucky	1	4
Wayne State University	3	3
Temple University	3	2
Emory University	2	2
University of Texas, Houston	2	2
University of Arizona	2	2
University of Minnesota	3	1
Henry Ford Health System	2	1
Stanford University	1	1
Virginia Commonwealth University	1	1
New York Presbyterian Hospital	2	0
University of California, San Francisco	2	0
Medical College of Wisconsin	1	0

Hotline 1-866-99-ALIAS (25427)

If you are interested in getting more involved with the NETT you may be interested in joining one of our NETT working groups

<i>Working Group</i>	<i>Contact Person</i>
Human Subjects Protection	Michele Biros
	michelle.biros@gmail.com
EMS	Craig Warden
	wardenc@ohsu.edu
Recruitment/Surveillance	James Quinn
	quinnj@stanford.edu jquinn@stanfordmed.org
NETT Methods Workgroup	Valerie Durkalski
	durkalsv@musc.edu

There is a new calendar on the NETT website. Never again will you wonder when an event is!

The calendar can be found at http://nett.umich.edu/nett/nett_calendar

••••• Visit the NETT Website •••••
••••• at nett.umich.edu •••••