

NETT-WORKINGS

NEUROLOGICAL EMERGENCIES TREATMENT TRIALS (NETT) NETWORK

July 2013

Emory University
 David Wright, MD
 Henry Ford Health System
 Christopher Lewandowski, MD
 Medical College of Wisconsin
 Tom Aufderheide, MD
 University of Kentucky
 Roger Humphries, MD and Creed Pettigrew, MD
 Oregon Health & Science University
 Robert Lowe, MD, MPH and Craig Warden, MD
 University of Pittsburgh
 Clifton Callaway, MD, PhD and Jon Rittenberger, MD
 Temple University
 Nina Gentile, MD
 University of Arizona
 Kurt Denninghoff, MD
 SUNY Downstate Medical Center
 Steven Levine, MD
 Massachusetts General Hospital
 Joshua N. Goldstein, MD, PhD
 Stanford University
 James V. Quinn, MD

PARTICIPATING HUBS AND INVESTIGATORS

National Institute of Neurological Disorders and Stroke (NINDS)

Clinical Trial Group
 Robin Conwit, MD and Scott Janis, PhD

CLINICAL COORDINATING CENTER (CCC)

University of Michigan
 William Barsan, MD

STATISTICAL & DATA MANAGEMENT CENTER (SDMC)

Medical University of South Carolina
 Yuko Palesch, PhD

University of California, San Francisco
 J. Claude Hemphill, III, MD
 New York Presbyterian Hospital
 Stephan Mayer, MD
 University of Cincinnati
 Arthur Pancioli, MD
 University of Maryland
 Barney J. Stern, MD
 University of Minnesota
 Michelle Biros, MD, MS
 University of Pennsylvania
 Jill Baren, MD, MBE
 University of Texas
 Elizabeth Jones, MD
 Virginia Commonwealth University
 Joseph P. Ornato, MD
 Wayne State University
 Robert Welch, MD
 University of California, Los Angeles
 Jeffrey Saver, MD and Sidney Starkman, MD
 Ohio State University
 Michel Torbey, MD

Enrollment Update: As of 7-31-13 at 1:20p (EDT)

ProTECT

POINT

SHINE

Arizona	86	27	Not Active
Cincinnati	80	70	6
Emory	83	36	23
HFH	15	38	<5
Kentucky	25	30	14
Maryland	<5	22	<5
Mass General	Not Active	<5	<5
Minnesota	77	69	<5
NYP	<5	38	24
Ohio State	Not Active	Emmes	10
OHSU	30	36	<5
Pittsburgh	Not Active	<5	7
SUNY Downstate	<5	25	<5
Stanford	77	45	<5
Temple	50	47	13
Texas	73	46	9
UCLA	Not Active	Emmes	<5
UCSF	20	35	<5
UPenn	59	142	<5
VCU	29	12	<5
Wayne State	23	83	<5
Wisconsin	71	22	<5
Emmes (POINT only)	-	772	-
Ancillary Sites (SHINE only)	-	-	52
TOTAL	805	1597	182

PLEASED TO MEET YOU UNIVERSITY OF PITTSBURGH...



Jon Rittenberger, MD, MS
NETT Hub Co-Investigator
University of Pittsburgh

Dr. Rittenberger joined the Department of Emergency Medicine at the University of Pittsburgh after Emergency Medicine Residency and Resuscitation Research fellowship. His research program studies the management of patients resuscitated from cardiac arrest and is developing a model to predict neurologic and functional outcome in these patients. He lives in Pittsburgh with his wife, Alexis, daughter, Isolde, two dogs and two cats. (Anyone remember Lorne Greene's New Wilderness?) With the departure of Isolde's training wheels this summer, bicycle rides are the activity of choice.

Ava Puccio, RN, PhD
ProTECT Co-Investigator
University of Pittsburgh

Dr. Puccio received her bachelor of science degree at the University of Pittsburgh in 1988 majoring in neuroscience. While working as a laboratory technician for several years, Dr. Puccio pursued a nursing degree and graduated from the University of Pittsburgh with a bachelor in nursing in 1994, graduating summa cum laude. Dr. Puccio joined the Department of Neurological Surgery as a nurse coordinator on the National Acute Brain Injury Study: Hypothermia (NABIS:H) study and also was the coordinator for the Brain Trauma Research Center in 1995.



Sara DiFiore
NETT Hub Primary Study Coordinator
University of Pittsburgh

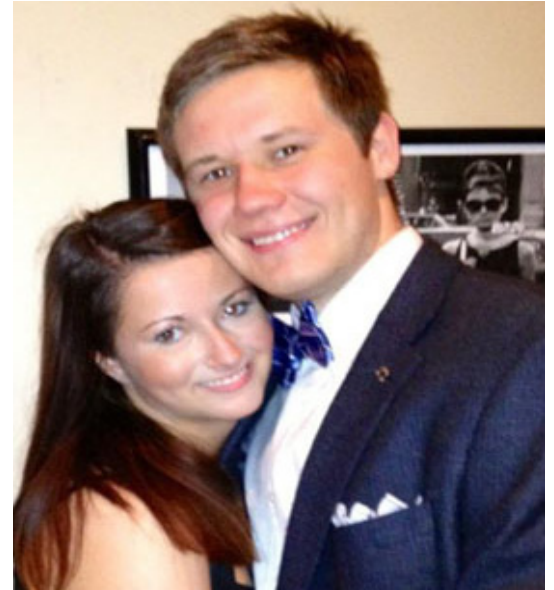
Sara joined the department of Emergency Medicine in 2010 as a research coordinator for studies recruiting from the Emergency Department. Prior to that, she worked at the University of Pittsburgh's IRB and the Research Office at the VA Pittsburgh Health System. Outside of the research world, Sara enjoys trying new recipes and spending time with family and friends.



PLEASED TO MEET YOU (CONTINUED)...

Patrick Coppler
NETT Hub Study Coordinator
University of Pittsburgh

Patrick recently graduated from the University of Pittsburgh and has been working with the Pittsburgh NETT team since October 2012. In addition to being a research coordinator for multiple trials at the Mercy and Presbyterian sites, Patrick is a resuscitation researcher actively studying post cardiac arrest physiology and hemodynamic management under the mentorship of the Pittsburgh NETT investigators. When Patrick is not hard at work at the hospitals or the laboratory, he is busy practicing and performing classical and jazz guitar, reading George R. R. Martin's Game of Thrones series, and spending time with his three-month old niece Corinne Coppler.



Stroke Hyperglycemia Insulin Network Effort Trial

**Principal Investigators: Karen Johnston, MD, MSc,
Askiel Bruno, MD, and Christiana Hall, MD**

Enrollment

Congratulations to the following study teams for enrolling their first subject in SHINE during this quarter: **UCLA Medical Center, Baylor College of Medicine, Henry Ford Hospital, UT Southwestern University Hospital, University of Michigan, Massachusetts General Hospital** and **UPMC Mercy Hospital**.

Newly Activated Sites

Additionally, we would like to welcome our recently activated sites which include **Sinai-Grace Hospital, UPMC Mercy Hospital, University Medical Center Brackenridge, Seton Medical Center, Kings County Hospital, UCSF Medical Center, and Emory University Hospital**.

Thanks to all for your continued support of SHINE.

-Amy Fansler (ACF7H@hscmail.mcc.virginia.edu)



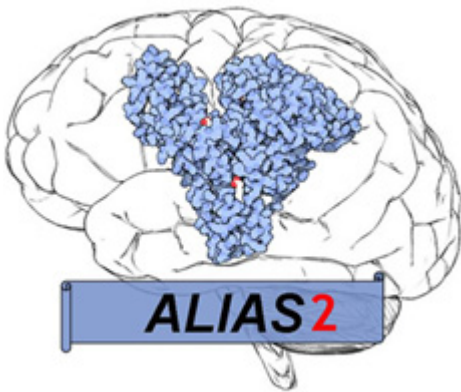
Platelet-Oriented Inhibition in New TIA Trial

Principal Investigator: Clay Johnston, MD

IPad Consent Tool

This is a friendly reminder to sites with the IPad Consent Tool: Please continue to routinely use the tool during the consent process. Next month the consent video will be available in Spanish, Mandarin and French Canadian. Additionally, a [training video](#) is available on the POINT [Education page](#) as a resource to use with your staff during training.

-Tess Bonham (tbonham@umich.edu)



High-Dose Albumin Therapy For Neuroprotection In Acute Ischemic Stroke

Principal Investigator: Myron Ginsberg, MD

Regulatory close-out instructions

1. Please upload notification to your IRB of final study closure to “IRB Close-out Notification” in NETT Regulatory WebDCU.
2. Upload an acknowledgement from your IRB of final study closure to “IRB Close-out Acknowledgement” in NETT Regulatory WebDCU.
3. Upload the final Delegation of Authority (DOA) Log to NETT Regulatory WebDCU. The DOA Log must be completed with a final date for all study team members and the PI signature.
4. Make all ALIAS study team members inactive in the Project Spoke Team Member table in NETT Regulatory WebDCU.
5. Send copies of these final close-out documents, including the monitor visit log, to Kristen Clasen clasen@muscc.edu or by fax to (843) 876-1923.

-Sam Mawocha (smawocha@umich.edu)

Save the date

NETT Investigators are invited to our annual

NETT Investigator Retreat

*October 21 - 22, 2013**

Chicago, IL

** Please plan to arrive the evening of October 20th. We will meet all day the 21st and half the day on the 22nd.*

NETT Network

Contact Us: nett-contact@umich.edu (734) 232-2142 Website: <http://nett.umich.edu>